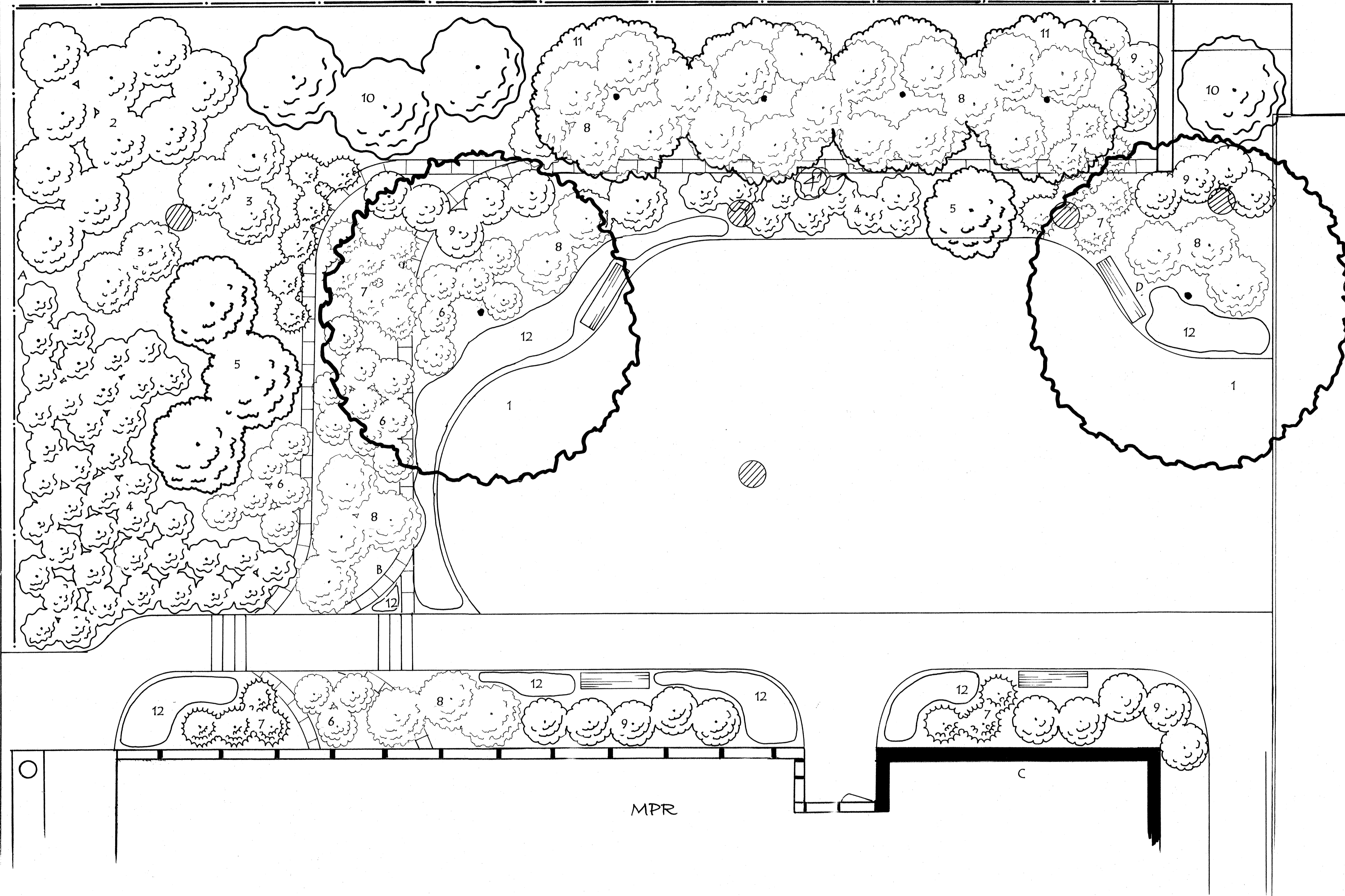


CHURCH



PLANT KEY

ID NO.	COMMON NAME	SCIENTIFIC NAME	SIZE	REMARKS
1	RIVER BIRCH	Betula nigra	4-5' x 3-5'	3-trunk clump; arching form; cinnamon-brown bark for winter interest
2	DWARF KOREAN LILAC	Syringa meyeri 'Palibau'	4-5' x 5-7'	Reddish-purple buds open to fragrant pale lilac flowers.
3	IVORY HALO DOGWOOD	Cornus alba 'Ballhalo'	5-6' x 5-6'	Variiegated green and white summer foliage and bright red twigs in winter
4	CHAMPLAIN SHRUB ROSE	Rosa 'Champlain'	3' x 3'	Dark red velvety flowers with a fresh light scent from spring until frost; orange hips provide winter interest
5	ROYAL STAR MAGNOLIA	Magnolia kobus var. stellata 'Royal Star'	8-10 x 8-10	Pink buds open in April to double-white fragrant flowers; fall bronze foliage
6	DWARF EUROPEAN CRANBERRY BUSH VIBURNUM	Viburnum opulus 'Nanum'	2-3' x 2-4'	Dense mounded dark green foliage
7	MICROBIOTA DECUSSATA	Russian Cypress	1' x 3-4'	Low spreading evergreen with soft bright green summer foliage
8	CUTLEAF STEPHANANDRA	Stephanandra incise 'Crispa'	1-2' x 5-6'	Small greenish-white June flowers; arching branches with bronze/green foliage form dense compact groundcover
9	ENDLESS SUMMER HYDRANGEA	Hydrangea macrophylla 'Ballmer'	3-5' x 3-5'	Flowers up to 8" diameter can be pink or blue depending on soil pH; blooms most of summer
10	DIABOLO NINEBARK	Physocarpus opulifolius 'Monlo'	8-10' x 8-10'	Reddish-purple foliage with creamy-white spring flowers
11	AUTUMN BRILLIANCE SERVICEBERRY	Ameianchier x grandiflora 'Autumn Brilliance'	20' x 15'	White spring blossoms followed by purplish-black showy fruit; bright red-orange fall foliage
12	PURPLE PETTICOATS CORAL BELLS	Heuchera 'Purple Petticoats'	1' x 2'	Dark purple ruffled foliage persists through most of winter; small airy flowers above foliage

MPR POCKET GARDEN

SCALE: 1 inch = 5 feet

NORTH ↗

February, 2006